

# SEED

School Emotional Education: The right practical way for teachers to teach emotional education in primary schools

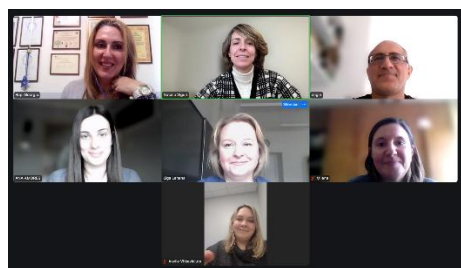
1-2023-ES01-KA220-SCH-000153546



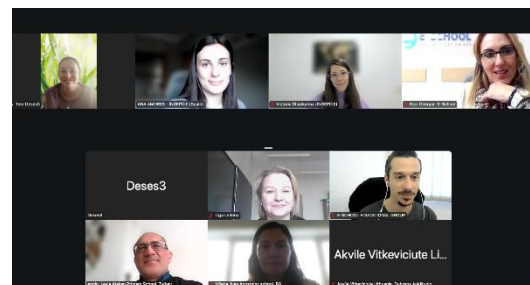
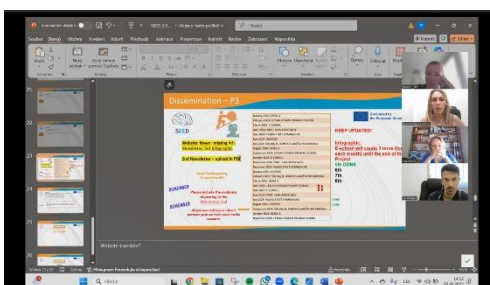
## The "SEED" Project Online meetings – The SEED platform development

The SEED project's foundation has been the seamless completion of the partners' tasks and the development of its deliverables through collaboration, understanding, feedback, and communication between the partners since its launching. As a result, **regular online meetings**, together with in-person transnational gatherings, have been and are a crucial component of the project's effectiveness in achieving its goals.

Each month, the partners convene virtually to address any issues that come up in a cooperative and understanding manner, offer support and clarification on contentious or ambiguous issues, determine the best course of action based on the deadlines, and track the dissemination process to ensure the project gets the recognition and publicity it merits.

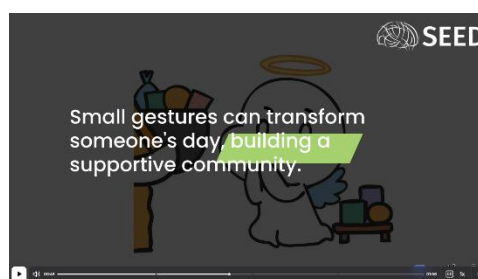
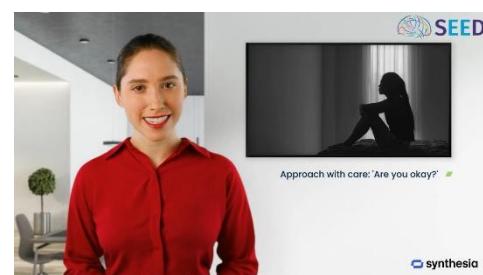
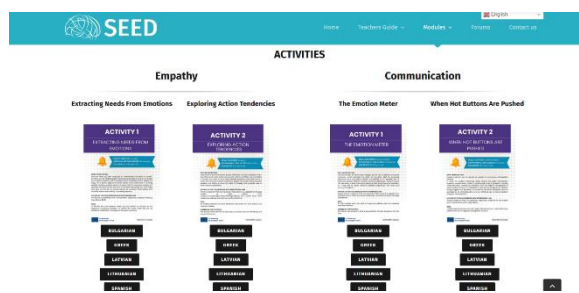


During these regular meetings, the partners present and provide input on deliverables, including the Teacher's Guide for Emotional Education, the suggested classroom activities, the pilot testing of the content in the partner schools, and all project phases overall.



This communication between the partners has been important for the creation of the **online platform**, which presents the main points of the Guide for teachers, categorized into **four sections/modules**: 1) Self-awareness, 2) Self-management, 3) Social awareness, 4) Relationship management. Each section contains:

- A short and easy-to-understand **video** explaining the concept being examined.
- **Resources** offering material for further in-depth investigation of the issue.
- User-friendly **quizzes** for consolidating the material and for self-assessment.
- The prepared by the partners and tested in pilot testing **practical activities** related to the concept, for classroom application.



The partners' flawless cooperation and interaction so far is expected to bear fruit in the project's final and long-term dissemination, establishing it as a benchmark for the beneficial application of emotional intelligence in the classroom, which, according to all research, is capable of improving learners' learning and emotional profiles.

[lms.theseedproject.eu](https://lms.theseedproject.eu)



Co-funded by the European Union

Funded by the European Union. Views and opinions expressed are however those of the author(s) only and do not necessarily reflect those of the European Union or the European Education and Culture Executive Agency (EACEA). Neither the European Union nor EACEA can be held responsible for them.